

S & M

SAN & MONI

Product Guide

SAFETY



■SAN&MONI Pack in Shampoo
200g



■SAN&MONI Scalp serum
120ml
Refill 300ml



■SAN&MONI Scalp essence
《Medicated Hair Growth Tonic》
150ml
Refill 300ml



■SAN&MONI Scalp care Shampoo V
240ml
Refill 700ml
700ml Dedicated cartridge

■SAN&MONI Rich Treatment V
210g
Refill 700g
700g Dedicated cartridge



■SAN&MONI Scalp care Shampoo M
240ml
Refill 700ml
700ml Dedicated cartridge

■SAN&MONI Rich Treatment M
210g
Refill 700g
700g Dedicated cartridge

SAN&MONI: Filled with "What Adults Desire"

The raw collagen that SAN&MONI focuses on is the "origin collagen."
It played a crucial role in the evolution of life in ancient times.

With powerful vitality that awakens a new skin,
It revitalizes the skin and nurtures healthy hair.

SAN&MONI was created through research on adult skin and hair.
It fulfills "what adults desire."



SAN&MONI incorporates "raw collagen" in all products in its lineup.

Pure luxury for adult skin and hair.

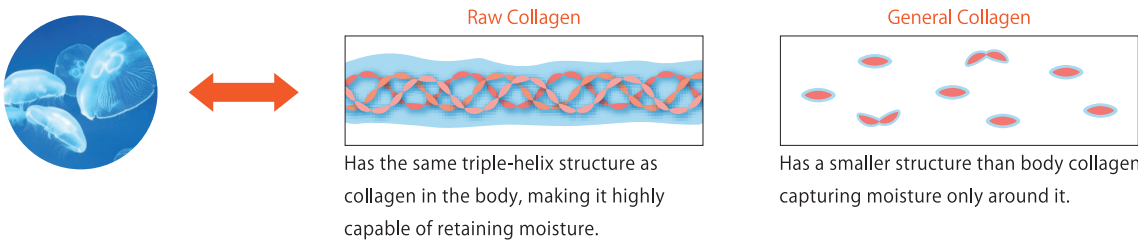
To keep the scalp and hair beautiful,
we have luxuriously blended the essential ingredients that adults need.

Main ingredients

Raw Collagen ※Water-soluble Collagen

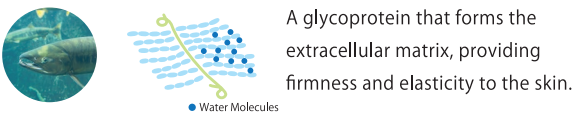
Moisturizing Effect

The raw collagen extracted from jellyfish under strict temperature control has about four times the moisture retention and approximately three times the moisturizing power of regular collagen.



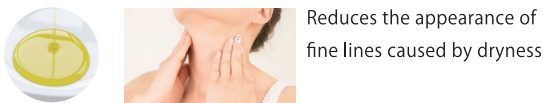
Proteoglycan ※Water-soluble Proteoglycan

Moisturizing Effect



Retinol ※Retinyl Palmitate

Moisturizing Effect



Reduces the appearance of fine lines caused by dryness.

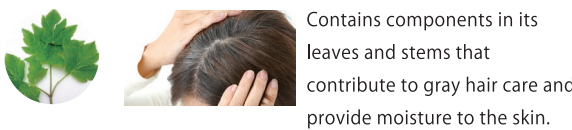
Licorice Extract ※Licorice Leaf Extract

Improves Volume and Strength



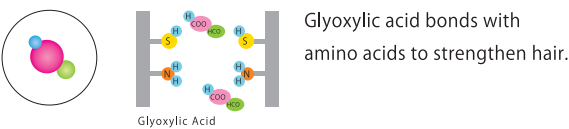
Ashitaba ※Ashitaba Leaf/Stem Extract

Moisturizing Effect



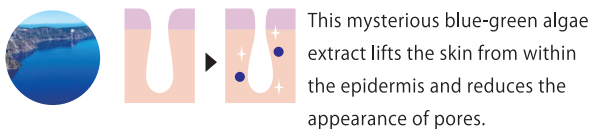
Amino Link ※Glyoxylic Acid

Hair Repair



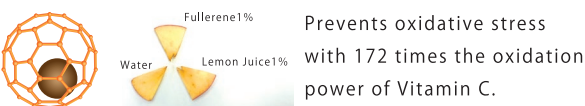
Lanablue ※Aphanizomenon Flos-Aquae Extract

Moisturizing Effect



Fullerene

Antioxidant Effect



Green Tea Extract ※Green Tea Distillate

Deodorizing, Antibacterial, and Antioxidant Effects



Daily series

Daily care that protects hair from daily oxidative stress and improves hair quality.

Choose a shampoo and treatment suited to your scalp and hair condition to maintain a healthy scalp environment and achieve your desired hair texture.



SAN&MONI Scalp Care Shampoo V & Rich Treatment V

■ Citrus Lavender fragrance



For soft hair and hair strengthening
Volume type

Volume type

Firmness and resilience + Volume boosting + Scalp care



<Amino Link> Hair Repair



<Fullerene> Antioxidant Effect



<Raw Collagen> Moisturizing Effect



<Proteoglycan> Moisturizing Effect



<Ashitaba> Moisturizing Effect



<Amino acid-based surfactant> Alanine-based surfactant

SAN&MONI Scalp Care Shampoo M & Rich Treatment M

■ Citrus Lavender fragrance



For frizzy hair, provides smooth and manageable finish
Moisture type

Moisture type

Controls frizz and waves + Makes hair easier to manage + Scalp care



<Amino Link> Hair Repair



<Fullerene> Antioxidant Effect



<Raw Collagen> Moisturizing Effect



<Proteoglycan> Moisturizing Effect



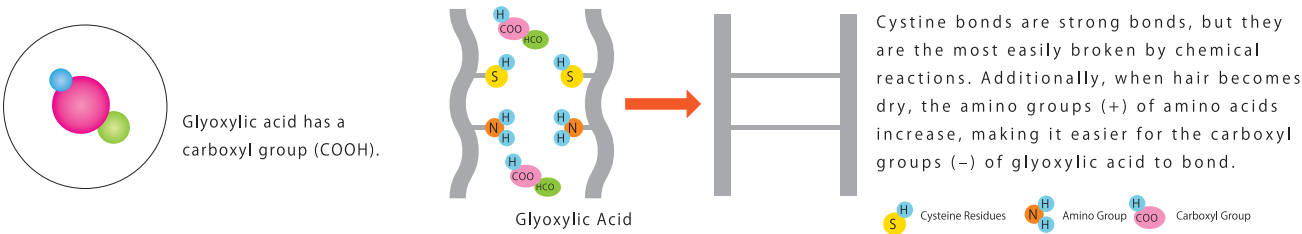
<Ashitaba> Moisturizing Effect



<Amino acid-based surfactant> Taurine-based surfactant

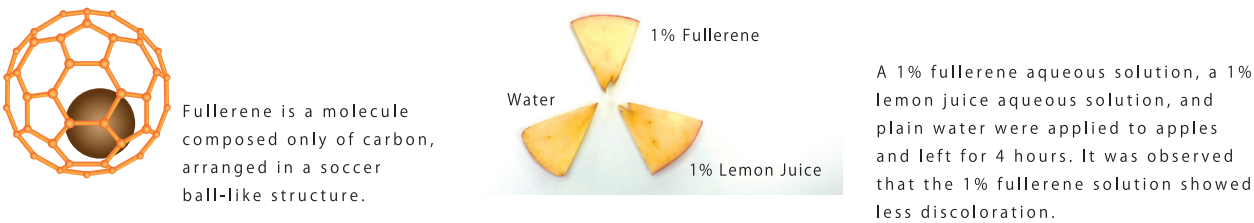
"Amino Link" Glyoxylic Acid to Improve Hair Quality

Glyoxylic acid binds with amino acids to form cross-links, giving strength to the hair and leading it to a healthy condition.



Fullerene to Remove Reactive Oxygen and Prevent "Rusting"

Fullerene absorbs reactive oxygen within its molecule to prevent oxidation, neutralizing reactive oxygen with an antioxidant power "172 times that of Vitamin C."



Shampoo and treatment combinations selected based on scalp and hair condition

Refreshing scalp × Fluffy hair

V × V Type

Scalp Care Shampoo V Rich Treatment V



Moist scalp × Fluffy hair

M × V Type

Scalp Care Shampoo M Rich Treatment V



Refreshing scalp × Manageable hair

V × M Type

Scalp Care Shampoo V Rich Treatment M



Moist scalp × Manageable hair

M × M Type

Scalp Care Shampoo M Rich Treatment M



Spa series

Refreshing scalp + Soft, fluffy hair

Professional salon spa treatments for a healthy scalp and hair.



■ Make spa treatments more accessible
by combining them with cuts, coloring, and perms...

1 : BASIC Course | Removes dirt that is difficult to remove with regular shampoo and cares for both hair and scalp.

2 : COLOR Course | Gently cleanses and moisturizes hair and scalp after coloring.

3 : PERM Course | Gently cleanses and moisturizes hair and scalp after perming.

1 : BASIC Course

Pre-rinse or
One Shampoo

2 : COLOR Course

Rinse out the color
and perform a
one-time shampoo

3 : PERM Course

Rod Removal

Rinse

Pack in shampoo

Rinse

Rich Treatment
V (Volume) M (Moisture)

Rinse

Scalp Serum

高保湿の炭酸クレンジング

SAN&MONI
Pack in shampoo



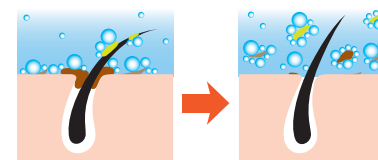
Cleansing

Carbonated Cleansing

■ Citrus Lavender fragrance

■ Scalp Cleansing

It gently cleanses the hair and scalp while providing excellent moisturizing effects, thoroughly cleansing even the pores.



<Carbonic Acid>
Carbon Dioxide Gas
※ Propellant



<Raw Collagen>
Moisturizing Effect
※ Water-soluble Collagen



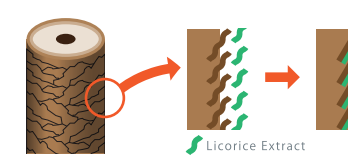
<Licorice Extract>
Firmness and resilience
※ Licorice Leaf Extract



<Ashitaba>
Moisturizing Effect
※ Ashitaba Leaf/Stem Extract

■ Volume-Up Effect

Licorice extract repairs the cuticle, enhancing resilience and strength.



Activates cells from the scalp to the neck with just one product.

SAN&MONI
Scalp Serum



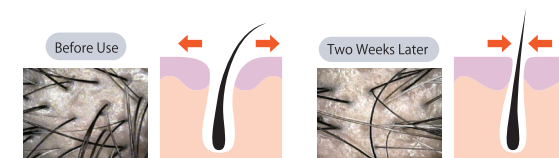
Serum

Scalp and Neck Serum

■ Citrus blossom fragrance.

■ Pore Tightening

It provides elasticity and moisture to the skin, tightening the pores. It also makes the hair appear more voluminous.



<Raw Collagen>
Moisturizing Effect
※ Water-soluble Collagen



<Proteoglycan>
Moisturizing Effect
※ Water-soluble Proteoglycan



<Retinol>
Moisturizing Effect
※ Retinyl Palmitate



<Lanablu>
Enhanced Hair Firmness
※ Aphanizomenon Flos-Aquae Extract



<Ashitaba>
Moisturizing Effect
※ Ashitaba Leaf/Stem Extract



<Green Tea Extract>
Deodorizing Effects
※ *Green Tea Distillate

■ Dry Fine Wrinkle Care

It improves moisture retention, making dry fine lines less noticeable.



To stimulate hair growth

*A medicated hair growth tonic
that provides gentle nourishment for hair growth.*

Enjoy soft styling every day while benefiting from hair growth effects.



Volume-Up and Hair Growth Effects

SAN&MONI
Scalp essence
《Medicated Hair Growth Tonic》

How to use



Medicinal
hair restorer

Quasi-drug

■ Citrus Lavender fragrance

front



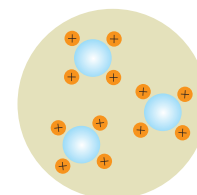
side



After shampooing, in a clean state, spray two pumps of the scalp essence onto each of the seven target areas on the top of the head. Gently massage the product into the scalp, focusing on the areas of concern.

Realizing! Volume Up

It works on both the surface and inside of the hair, providing strength with a soft touch, and as you continue using it, you will experience more firmness and body.

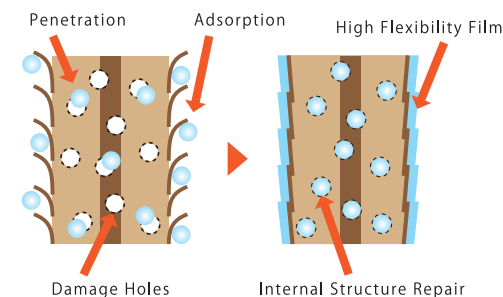


Firmness and resilience

※Glyceryl-N-(2-Methacryloyloxyethyl)
Carbamate-Methacrylic Acid Stearyl Copolymer,
Glycerin, 1,3-Butylene Glycol,
N-Coconut Oil Fatty Acid Acyl-L-Arginine Ethyl,
DL-Pyrrolidone Carboxylate, Purified Water

※The diagram is for illustration purposes.

Volume-Up Mechanism



Volume-Up Styling



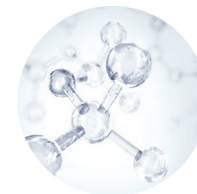
before

after

After shampooing and while the scalp is clean, directly spray the scalp essence on about seven spots where you are concerned, and blend it well. Then, style it with a blow dryer, and it will finish with a fluffy look.

Contains ingredients that promote hair growth

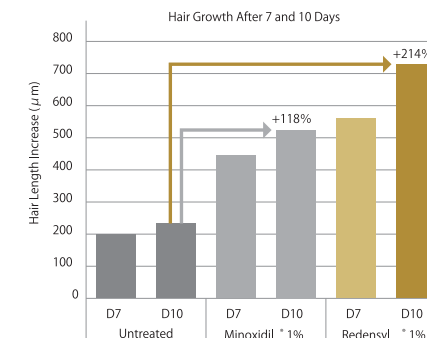
Activates the stem cells in the bulge area, which are essential for hair growth, and promotes the proliferation of hair matrix cells.



Hair Growth Promotion

※Glycerin, Sodium Pyrosulfite,
Glycine, Zinc Chloride, Pine Extract,
Tea Extract (1), Purified Water

※The diagram is for illustration purposes.



Example of a man in his 40s
using it for 3 months



before

after

Hair loss has reduced, and the volume at the top of the head has slightly increased.

Prevention of Hair Loss and Improvement of Scalp Environment

With the excellent moisturizing power of raw collagen and the water retention properties of plant extracts, it gives moisture to the scalp, and FGF activation and hair loss prevention can be expected.

Active Ingredients



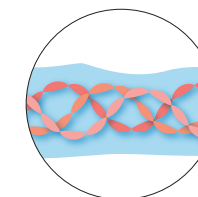
<Dicaprylate Glycyrrhizinate>
Anti-inflammatory Action



<Carrot Extract>
Fibroblast Proliferation
and Moisturizing Action



<Swertia Extract>
Circulation Promoting Action



<Raw Collagen>
Moisturizing Effect
※Water-soluble Collagen

Pack in shampoo Massage



頭皮や髪の毛の汚れをすっきり落としてリセットします。
血液やリンパの流れを促し、筋肉の緊張を和らげます。

3 ~ 5minutes

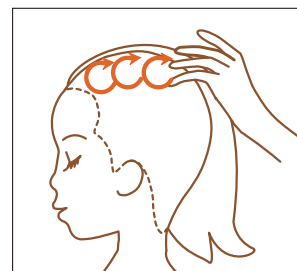
Massage Preparation

Apply evenly to the entire scalp, blend well into the scalp, and then gather the hair ends at the top. For the pack-in shampoo, take some foam in your hands and apply it to five areas: the top of the head, both sides, and the nape, then blend it in.

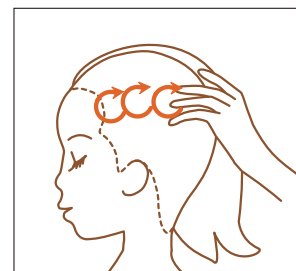
Side



Back



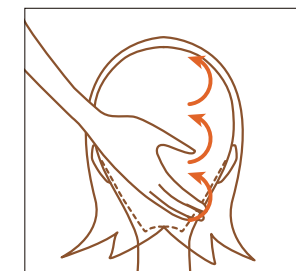
Place three fingers slightly outside the midline, and perform kneading, lifting upward from both sides. Repeat twice starting from the front.



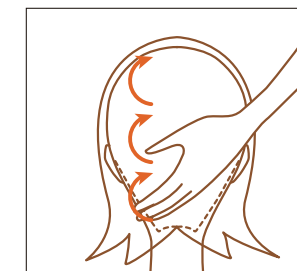
Place three fingers on the temporal area and knead upward, repeating twice starting from the front.



Place three fingers above the ears and knead upward, repeating twice starting from the front.



Place three fingers at the base of the back of the head and knead upward. Repeat twice starting from the bottom.



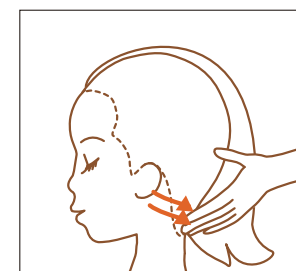
Repeat the same with the opposite hand on the other side.



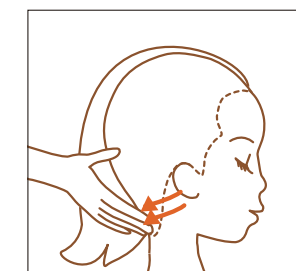
Place four fingers at the center of the hairline, and perform drainage along the midline, from front to back. Repeat twice.



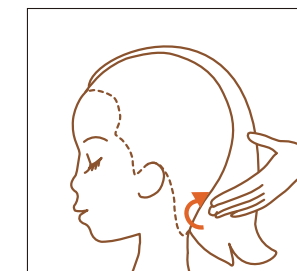
Place four fingers at the hairline on the temporal area and perform drainage from front to back. Repeat twice.



Place three fingers below the ear and perform drainage from front to back. Repeat twice.



Repeat the same with the opposite hand on the other side



Lightly press up once from the base of the skull with one finger. Afterward, rinse thoroughly with warm water and apply treatment.

Scalp serum Massage



Promotes metabolism, improving sagging and puffiness.
Nourishes the scalp, helping to grow healthy hair.

7 ~ 10minutes

Massage Preparation

For each spot, apply the serum while blending it in so it doesn't drip, then blend it into the whole scalp. Apply the scalp serum to ten areas as shown in the diagram, and massage it into the scalp. Afterward, apply generously to the neck and massage it in.

Left



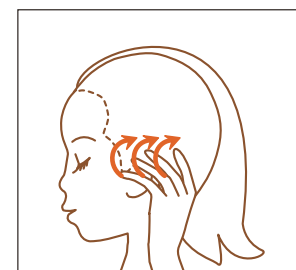
Back



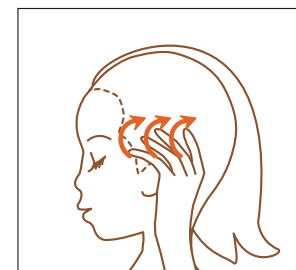
Right



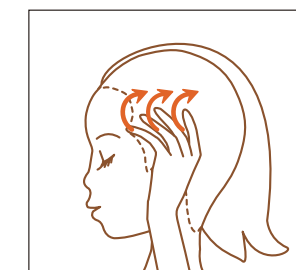
Place two fingers at the center of the hairline, and knead upward toward the top of the head. Repeat twice, following the facial line up to in front of the ear.



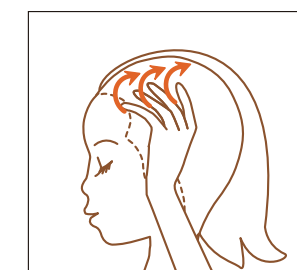
Place four fingers parallel above the ear and knead upward toward the top of the head. Repeat twice.



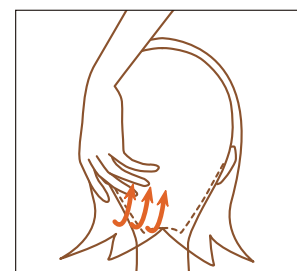
Place four fingers parallel to the side of the eyes and knead upward toward the top of the head. Repeat twice.



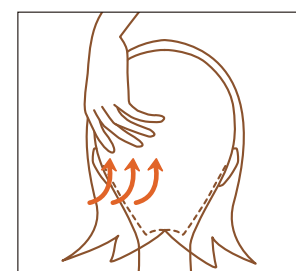
Place four fingers parallel at the temple and knead upward toward the top of the head. Repeat twice.



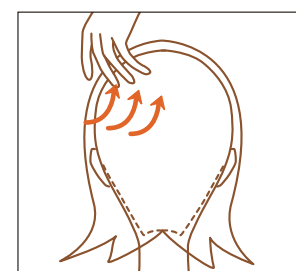
Place four fingers slightly outside the midline, and knead from front to back. Repeat twice.



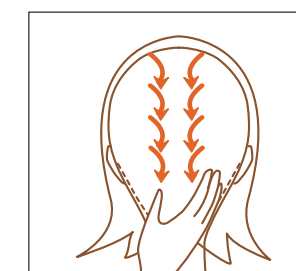
Place three fingers parallel at the lower back of the head, and knead upward toward the top of the head. Repeat twice.



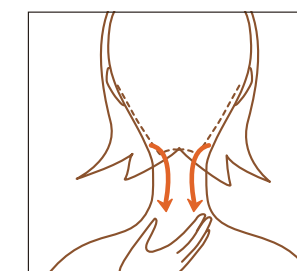
Place four fingers parallel at the middle of the back of the head, and knead upward toward the top of the head. Repeat twice.



Place four fingers parallel at the upper back of the head, and knead upward toward the top of the head. Repeat twice.



Press slightly outside the midline with your thumb and index finger, and knead from top to bottom. Repeat twice.



Apply a generous amount of scalp serum to the neck, and perform drainage along the neck bones from top to bottom. Repeat three times.

Repeat the same kneading from the bottom on the opposite side.

※For additional relaxation, follow with a neck and shoulder massage.